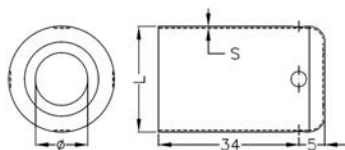


CAP20 / 27 / 56



| | Code | ϕ | L | S |
|------|-------|-------------|-------------|-----|
| Tab. | CAP20 | $\phi 10.2$ | $\phi 20.6$ | 0.3 |
| | CAP27 | $\phi 8.2$ | $\phi 20.6$ | 0.3 |
| | CAP56 | $\phi 10.2$ | $\phi 19.7$ | 0.2 |

Cappuccio liscio in metallo nichelato.
Nickel-plated metal smooth cap.