

Accessori LED
LED accessories



Legenda | Legend



Angolo fascio luminoso / *Beam angle*



USB Type-C



USB Type-A



DC-plug



Connettore 2 poli DIN +/- / *2-pole DIN +/- connector*



Ordine minimo / *Minimum order*



Accessori LED / LED accessories



PAD termici / *Thermal PADS*

353 › 354

Lenti / *Lenses*

355 › 361

Cover di protezione / *Protection covers*

362 › 364

Accessori elettronica / *Electronic accessories*

365 › 366

Accessori strip / *Strip accessories*

367

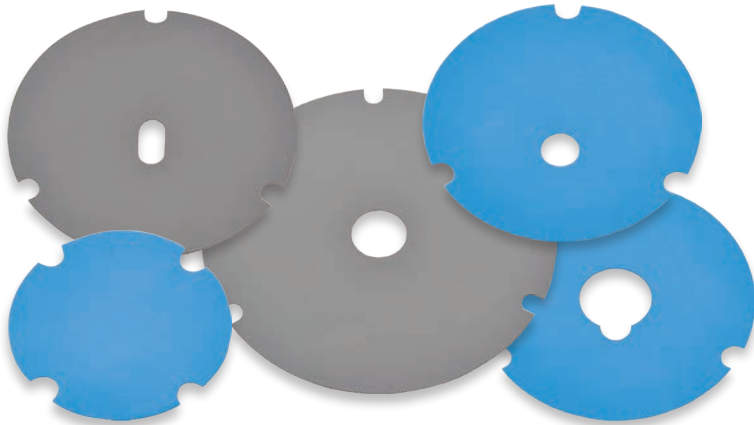
Accessori cavi / *Cable accessories*

368

Sistemi di raffreddamento / *Cooling systems*

369 › 370

PAD TERMICI preformati Preformed THERMAL PADS



Codice / Code	Ø mm	Tipo / Type
PAD.M08S.X001	31	Mono adesivo / Mono adhesive
PAD.B05S.X006		Biadesivo / Double-sided adhesive
PAD.B05S.C094	44	Biadesivo / Double-sided adhesive
PAD.M08S.X002	44	Mono adesivo / Mono adhesive
PAD.B05S.X004		Biadesivo / Double-sided adhesive
PAD.M08S.X003	48	Mono adesivo / Mono adhesive
PAD.B05S.X001		Biadesivo / Double-sided adhesive
PAD.M08S.X004	68	Mono adesivo / Mono adhesive
PAD.B05S.X005		Biadesivo / Double-sided adhesive
PAD.M08S.X006	78	Mono adesivo / Mono adhesive
PAD.B05S.X009		Biadesivo / Double-sided adhesive
PAD.M08S.X005	98	Mono adesivo / Mono adhesive
PAD.B05S.X002		Biadesivo / Double-sided adhesive

PAD termico preformato mono adesivo e biadesivo
Preformed mono adhesive or double-sided adhesive thermal PAD

Spessore / Thickness
0.25 mm

Conducibilità / Conductivity
Biadesivo / Double-sided adhesive: 1W/mk
Mono adesivo / Mono adhesive: 1.5W/mk

Altre forme / Other shapes
A richiesta / On request



Scheda tecnica completa sul nostro sito
Complete datasheet on our web site

www.easrl.com



Abbinabile a schede LED / Combined with LED board

CL075 / CL147 / CL166 / CL381

CL094

CL094 / CL148

*CL078 / CL148 / CL382

CL150

CL076 / CL151 / CL386

CL360

CL149 / CL152 / CL193 / CL355 / CL361

* Solo con uscita laterale cavo / Only with side exit cable

PAD TERMICI preformati in grafite Graphite preformed THERMAL PADS



Codice / Code	Ø mm	Tipo / Type
PAD002.01.004	32.4	Non adesivo / Not adhesive
PAD002.01.002	45	Mono adesivo / Mono adhesive
PAD002.01.001	67	Non adesivo / Not adhesive
PAD002.01.003	96	Non adesivo / Not adhesive

PAD termico preformato mono adesivo e non adesivo in graphite
Preformed mono adhesive and not adhesive graphite thermal PAD

Spessore / Thickness
0.30 mm

Conducibilità / Conductivity
4W/mk verticale / vertical
500W/mk orizzontale / horizontal

Altre forme / Other shapes
A richiesta / On request



Scheda tecnica completa sul nostro sito
Complete datasheet on our web site

www.easrl.com



Abbinabile a schede LED / Combined with LED board

CL075 / CL147 / CL166 / CL381

CL078 / CL094 / CL148 / CL150 / CL382

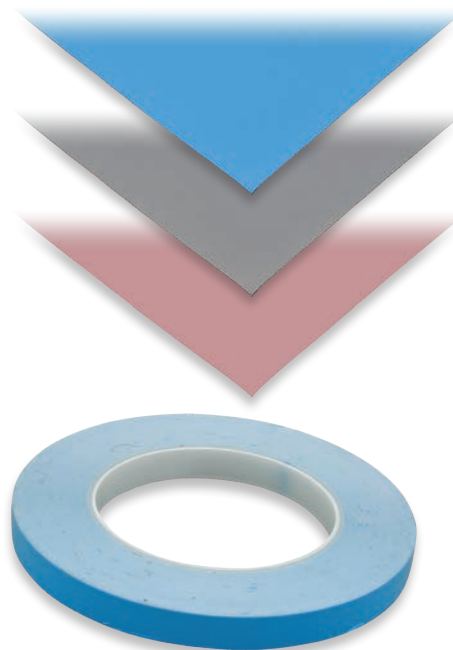
CL076 / CL151 / CL082 / CL386

CL149 / CL152 / CL193 / CL355 / CL361

PAD TERMICI THERMAL PADS



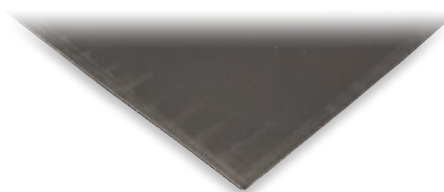
Codice Code	Tipo Type	Spessore Thickness	Conducibilità Conductivity	Larghezza Width	Lunghezza Length
PAD005.00	Biadesivo Double-sided adhesive	0.25 mm	1W/mk	1250 mm	
PAD008.00	Mono adesivo Mono-adhesive	0.30 mm	1W/mk	300 mm	A richiesta On request
PAD017.00	Non adesivo Non-adhesive	0.23 mm	1.6W/mk	1250 mm	
PAD007.01	Biadesivo Double-sided adhesive	0.25 mm	1W/mk	8 mm	Bobina / Reel 25 metri / meter
PAD013.00	Biadesivo Double-sided adhesive	0.25 mm	1W/mk	12 mm	



PAD TERMICO in grafite Graphite THERMAL PAD



Codice Code	Tipo Type	Spessore Thickness	Conducibilità Conductivity	Dimensioni Dimensions
PAD002.00	Mono adesivo Mono-adhesive	0.30 mm	4W/mk verticale / vertical 500W/mk orizzontale / horizontal	300 x 300 mm



Pasta termica dissipante per LED LED dissipating thermal paste



Codice Code	Conducibilità Conductivity	Confezione Package
PAS001.00	10.3W/mk	Tubo da 50gr / 50gr. tube
PAS001.01		Tubo da 160gr / 160gr. tube

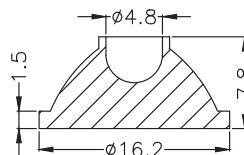


Schede tecniche complete sul nostro sito
Complete datasheets on our web site
www.easrl.com



LL016.015.00

Lente singola in PMMA / PMMA single lens



Codice Code	Ø mm	h mm	Angolo Angle	Finitura Finishing
LL016.015.00	16	7.8	15°	Chiara / Clear



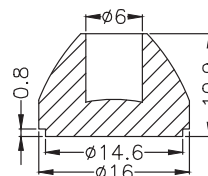
Scheda tecnica completa sul nostro sito
Complete datasheet on our web site

www.easrl.com



LL016.025.00

Lente singola in PMMA / PMMA single lens



Codice Code	Ø mm	h mm	Angolo Angle	Finitura Finishing
LL016.025.00	16	10.9	25°	Chiara / Clear



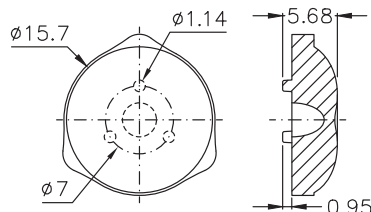
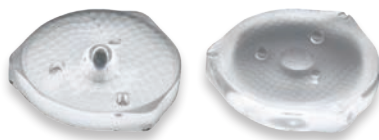
Scheda tecnica completa sul nostro sito
Complete datasheet on our web site

www.easrl.com



LL016.160.00

Lente asimmetrica singola in PMMA / PMMA asymmetric single lens



Codice Code	Ø mm	h mm	Angolo Angle	Finitura Finishing
LL016.160.00	15.7	5.68	160°	Trasparente / Transparent

Utilizzabile con / Usable with
Scheda LED / LED board CL462



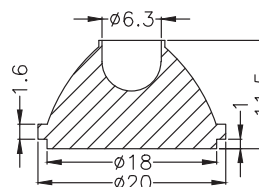
Scheda tecnica completa sul nostro sito
Complete datasheet on our web site

www.easrl.com



LL020.XXX.XX

Lente singola in PMMA / PMMA single lens



Codice Code	Ø mm	h mm	Angolo Angle	Finitura Finishing
LL020.005.00			5°	Chiara / Clear
LL020.010.00			10°	Chiara / Clear
LL020.025.00	20	11.5	25°	Chiara / Clear
LL020.045.00			45°	Chiara / Clear
LL020.045.01			45°	Satinata / Frosted



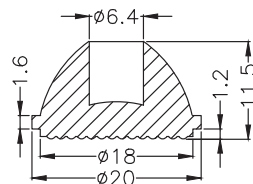
Scheda tecnica completa sul nostro sito
Complete datasheet on our web site

www.easrl.com



LL020.060.02

Lente singola in PMMA / PMMA single lens



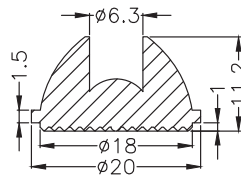
Scheda tecnica completa sul nostro sito
Complete datasheet on our web site

www.easrl.com



LL020.045.08

Lente singola in PMMA / PMMA single lens



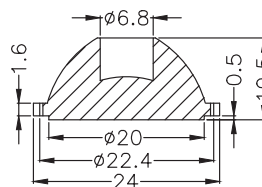
Scheda tecnica completa sul nostro sito
Complete datasheet on our web site

www.easrl.com



LL022.XXX.XX

Lente singola in PMMA / PMMA single lens



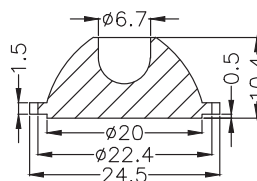
Scheda tecnica completa sul nostro sito
Complete datasheet on our web site

www.easrl.com



LL022.015.01

Lente singola in PMMA / PMMA single lens



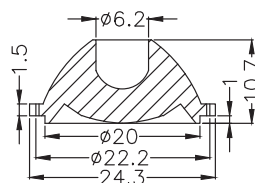
Scheda tecnica completa sul nostro sito
Complete datasheet on our web site

www.easrl.com



LL022.045.01

Lente singola in PMMA / PMMA single lens



Codice Code	Ø mm	h mm	Angolo Angle	Finitura Finishing
LL022.045.01	22	10.7	45°	Bordo satinato Frosted edge



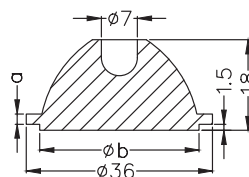
Scheda tecnica completa sul nostro sito
Complete datasheet on our web site

www.easrl.com



LL036.XXX.XX

Lente singola in PMMA / PMMA single lens



Codice Code	Ø mm	h mm	a mm	b Ø mm	Angolo Angle	Finitura Finishing
LL036.015.00			1.8	30.8	15°	
LL036.025.00	36	18	1.8	30.8	25°	Chiara / Clear
LL036.025.04			3.2	33	25°	



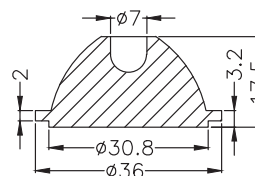
Scheda tecnica completa sul nostro sito
Complete datasheet on our web site

www.easrl.com



LL036.015.07

Lente singola in PMMA / PMMA single lens



Codice Code	Ø mm	h mm	Angolo Angle	Finitura Finishing
LL036.015.07	36	17.5	15°	Satinata-Maculata Frosted-Speckled



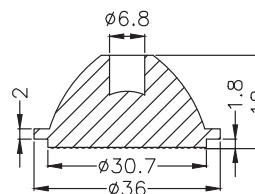
Scheda tecnica completa sul nostro sito
Complete datasheet on our web site

www.easrl.com



LL036.060.02

Lente singola in PMMA / PMMA single lens



Codice Code	Ø mm	h mm	Angolo Angle	Finitura Finishing
LL036.060.02	36	18	60°	Puntinata / Dotted



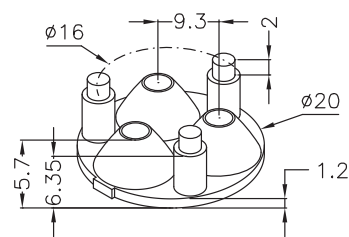
Scheda tecnica completa sul nostro sito
Complete datasheet on our web site

www.easrl.com



LM020.XXX.XX

Lente a tre posizioni in PMMA / Three position lens in PMMA



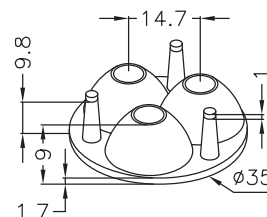
Utilizzabile con / Usable with
Scheda LED / LED board CL073

Scheda tecnica completa sul nostro sito
Complete datasheet on our web site
www.easrl.com



LM035.020.00

Lente a tre posizioni in PMMA / Three position lens in PMMA



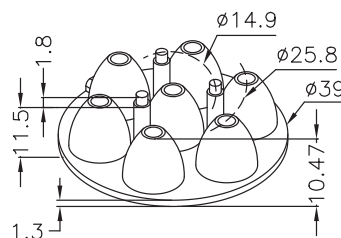
Utilizzabile con / Usable with
Scheda LED / LED board CL003

Scheda tecnica completa sul nostro sito
Complete datasheet on our web site
www.easrl.com



LM039.025.00

Lente a sette posizioni in PMMA / Seven position lens in PMMA



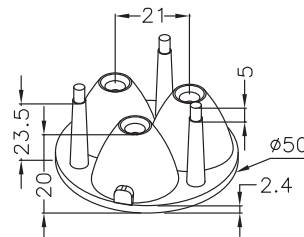
Utilizzabile con / Usable with
Scheda LED / LED board CL041

Scheda tecnica completa sul nostro sito
Complete datasheet on our web site
www.easrl.com



LM050.XXX.XX

Lente a tre posizioni in PMMA / Three position lens in PMMA



Utilizzabile con / Usable with
Scheda LED / LED board CL012, CL028, CL036

Scheda tecnica completa sul nostro sito
Complete datasheet on our web site
www.easrl.com

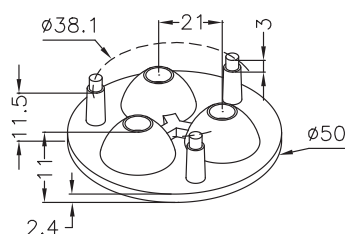


LM050.XXX.XX

Lente a tre posizioni in PMMA / Three position lens in PMMA



Codice Code	Ø mm	h mm	Angolo Angle	Finitura Finishing
LM050.025.03	50	14.5	25°	Puntiforme / Dotted
LM050.040.03			40°	



Utilizzabile con / Usable with

Scheda LED / LED board CL012, CL028, CL036



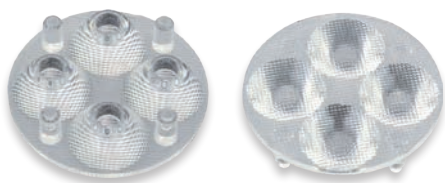
Scheda tecnica completa sul nostro sito
Complete datasheet on our web site

www.easrl.com

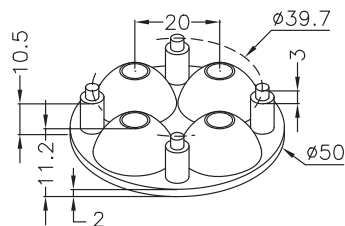


LM050.015.01

Lente a quattro posizioni in PMMA / Four position lens in PMMA



Codice Code	Ø mm	h mm	Angolo Angle	Finitura Finishing
LM050.015.01	50	13.5	15°	Puntiforme / Dotted



Utilizzabile con / Usable with

Scheda LED / LED board CL024



Scheda tecnica completa sul nostro sito
Complete datasheet on our web site

www.easrl.com

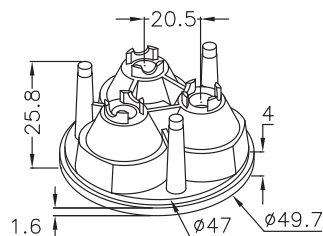


LM050.XXX.XX

Lente a tre posizioni in PMMA / Three position lens in PMMA



Codice Code	Ø mm	h mm	Angolo Angle	Finitura Finishing
LM050.015.00	49.7	25.8	15°	Chiara / Clear
LM050.045.01			45°	Satinata / Frosted



Utilizzabile con / Usable with

Scheda LED / LED board CL041



Scheda tecnica completa sul nostro sito
Complete datasheet on our web site

www.easrl.com

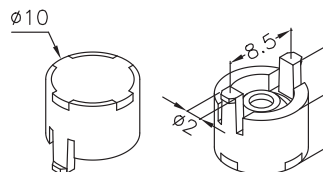


LL010.037.10

Lente singola in PMMA con collimatore integrato
PMMA single lens with integrated collimator



Codice Code	Ø mm	h mm	Angolo Angle	Finitura Finishing
LL010.037.10	10	11.5	37°	Satinata / Frosted



Utilizzabile con / Usable with

Scheda LED / LED board CL010



Scheda tecnica completa sul nostro sito
Complete datasheet on our web site

www.easrl.com

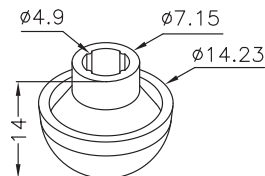


LL014.000.XXX.XX

Lente singola in PMMA / PMMA single lens



Codice Code	Ø mm	h mm	Angolo Angle	Finitura Finishing
LL014.000.01	14.23	14	/	Chiara / Clear
LL014.000.02			/	IR



Utilizzabile con / Usable with

LED Ø 5 mm



Scheda tecnica completa sul nostro sito
Complete datasheet on our web site

www.easrl.com

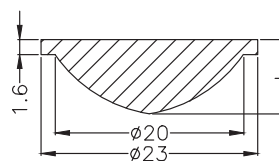


LP023.XXX.XX

Lente singola piano convessa in PMMA / PMMA single lens plano-convex



Codice Code	Ø mm	h mm	Angolo Angle	Finitura Finishing
LP023.H07.00	23	7	/	Chiara / Clear
LP023.H08.00		7.9	/	



Scheda tecnica completa sul nostro sito
Complete datasheet on our web site

www.easrl.com

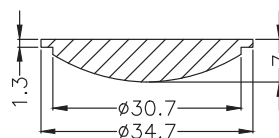


LP035.H07.06

Lente singola piano convessa in PMMA / PMMA single lens plano-convex



Codice Code	Ø mm	h mm	Angolo Angle	Finitura Finishing
LP035.H07.06	34.7	7	/	Diamante / Diamond



Scheda tecnica completa sul nostro sito
Complete datasheet on our web site

www.easrl.com

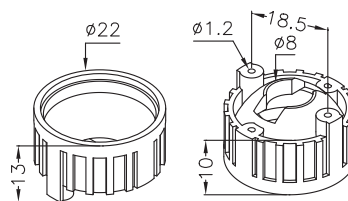


COL020.01

Collimatore / Collimator



Codice Code	Ø mm	h mm
COL020.01	22	12



Abbinabile a / Combinable with

Lente Ø 20 mm serie LL020... da ordinare separatamente
Ø 20 mm LL020... lens series to be ordered separately



Scheda tecnica completa sul nostro sito
Complete datasheet on our web site

www.easrl.com

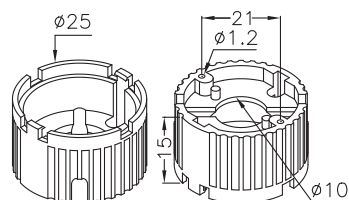


COL022.03

Collimatore / Collimator



Codice Code	Ø mm	h mm
COL022.03	25	15



Abbinabile a / Combinable with

Lente Ø 22 mm serie LL022... da ordinare separatamente
Ø 22 mm LL022... lens series to be ordered separately



Scheda tecnica completa sul nostro sito
Complete datasheet on our web site

www.easrl.com

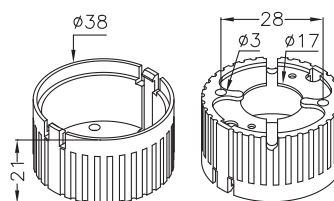


COL036.01

Collimatore / Collimator



Codice Code	Ø mm	h mm
COL036.01	38	21



Abbinabile a / Combinable with

Lente Ø 36 mm serie LL036... da ordinare separatamente
Ø 36 mm LL036... lens series to be ordered separately

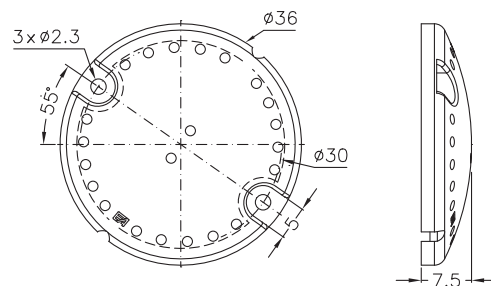


Scheda tecnica completa sul nostro sito
Complete datasheet on our web site

www.easrl.com



LL036.000.XX



Abbinabile a schede LED / Combined with LED board
CL075 / CL147 / CL166 / CL381



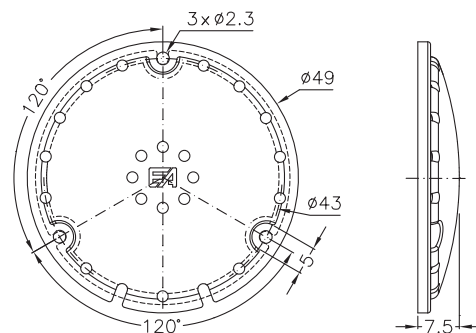
Scheda tecnica completa sul nostro sito
Complete datasheet on our web site

www.easrl.com



Codice Code	Ø mm	h mm	Materiale Material	Finitura Finishing
LL036.000.00				Trasparente / Transparent
LL036.000.01	36	7.5	PC	Opale / Opal
LL036.000.03				Satinata / Frosted

LL049.000.XX



Abbinabile a schede LED / Combined with LED board
CL078 / CL094 / CL148 / CL382



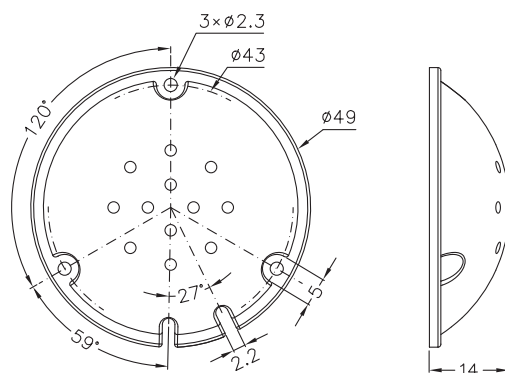
Scheda tecnica completa sul nostro sito
Complete datasheet on our web site

www.easrl.com



Codice Code	Ø mm	h mm	Materiale Material	Finitura Finishing
LL049.000.00				Trasparente / Transparent
LL049.000.01	49	7.5	PC	Opale / Opal
LL049.000.03				Satinata / Frosted

LL049.A00.00



Abbinabile a schede LED / Combined with LED board
CL405



Scheda tecnica completa sul nostro sito
Complete datasheet on our web site

www.easrl.com

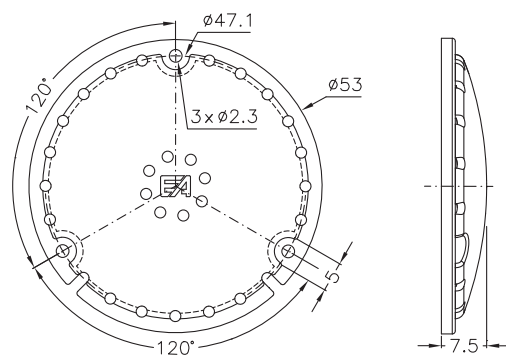


Codice Code	Ø mm	h mm	Materiale Material	Finitura Finishing
LL049.A00.00	49	14	PC	Trasparente / Transparent

LL053.000.XX



Codice Code	Ø mm	h mm	Materiale Material	Finitura Finishing
LL053.000.00				Trasparente / Transparent
LL053.000.01	53	7.5	PC	Opale / Opal
LL053.000.03				Satinata / Frosted



Abbinabile a schede LED / Combined with LED board
CL150



Scheda tecnica completa sul nostro sito
Complete datasheet on our web site

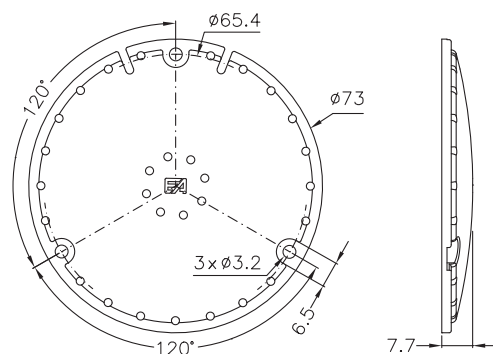
www.easrl.com



LL073.000.XX



Codice Code	Ø mm	h mm	Materiale Material	Finitura Finishing
LL073.000.01				Trasparente / Transparent
LL073.000.03	73	7.7	PC	Satinata / Frosted



Abbinabile a schede LED / Combined with LED board
CL076 / CL151 / CL386



Scheda tecnica completa sul nostro sito
Complete datasheet on our web site

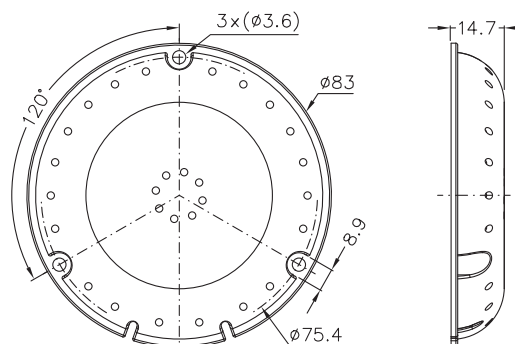
www.easrl.com



LL083.A00.00



Codice Code	Ø mm	h mm	Materiale Material	Finitura Finishing
LL083.A00.00	83	14.7	PC	Trasparente / Transparent



Abbinabile a schede LED / Combined with LED board
CL360

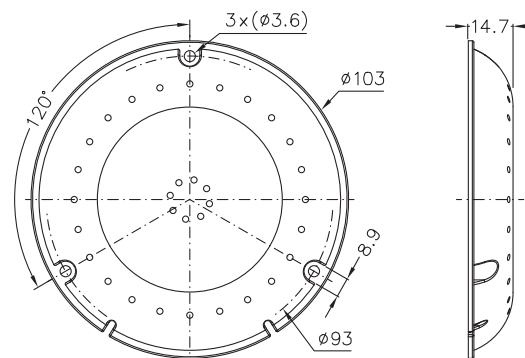


Scheda tecnica completa sul nostro sito
Complete datasheet on our web site

www.easrl.com



LL103.A00.00



Abbinabile a schede LED / Combined with LED board
CL361



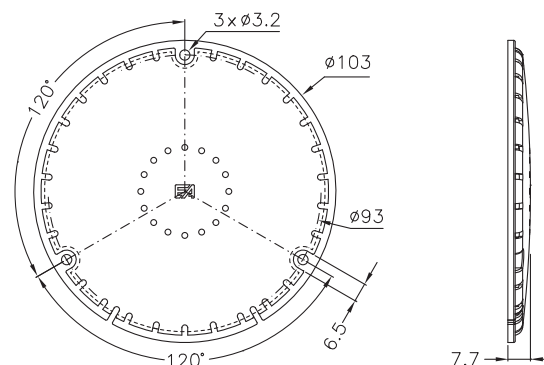
Scheda tecnica completa sul nostro sito
Complete datasheet on our web site

www.easrl.com



Codice Code	Ø mm	h mm	Materiale Material	Finitura Finishing
LL103.A00.00	103	14.7	PC	Trasparente / Transparent

LL103.000.XX



Abbinabile a schede LED / Combined with LED board
CL149 / CL152 / CL193 / CL355



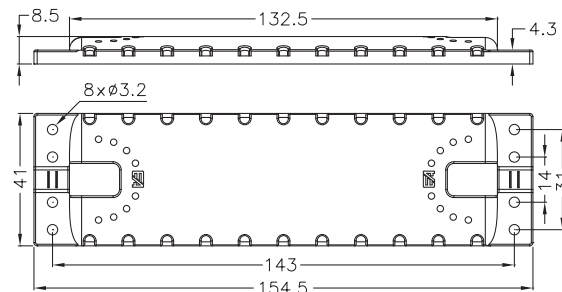
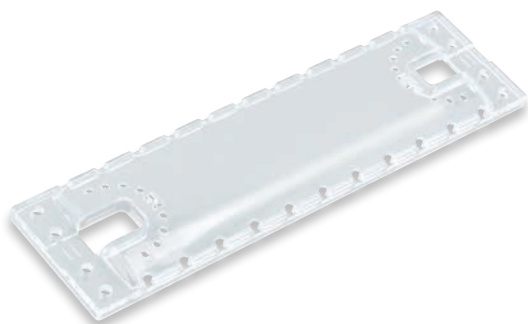
Scheda tecnica completa sul nostro sito
Complete datasheet on our web site

www.easrl.com



Codice Code	Ø mm	h mm	Materiale Material	Finitura Finishing
LL103.000.00				Trasparente / Transparent
LL103.000.01	103	7.7	PC	Opale / Opal
LL103.000.03				Satinata / Frosted

LL15441.000.XX



Abbinabile a schede LED / Combined with LED board
CL083



Scheda tecnica completa sul nostro sito
Complete datasheet on our web site

www.easrl.com



Codice Code	mm	h mm	Materiale Material	Finitura Finishing
LL15441.000.00				Trasparente / Transparent
LL15441.000.01	154.5 x 41	7.7	PC	Opale / Opal
LL15441.000.03				Satinata / Frosted

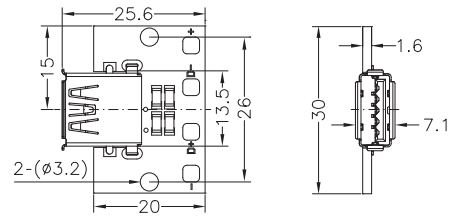
CNT033.01

Connettore USB Type-A / USB Type-A connector



Connettore remoto USB Type-A per carica cellulare, input e output max 5Vdc.

USB Type-A remote connector for mobile phone charging, input and output max 5Vdc.



Utilizzabile con / It can be used with

Scheda di controllo / CTC011A / CTC011A control electronic board



Scheda tecnica completa sul nostro sito
Complete datasheet on our web site

www.easrl.com



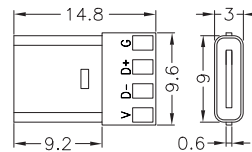
CNT24.SK.WW.SI.018

Connettore USB Type-C / USB Type-C connector



Connettore di alimentazione remoto USB Type-C.

USB Type-C remote power connector.



Utilizzabile con / It can be used with

Scheda di controllo / control electronic board CTC011A, CTC445



Scheda tecnica completa sul nostro sito
Complete datasheet on our web site

www.easrl.com



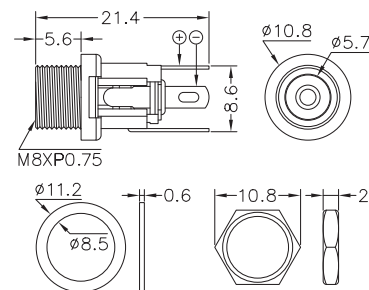
CNT02.SK.WW.BL.015

Connettore femmina DC-plug / Female DC-plug connector



Connettore di alimentazione remoto DC-plug femmina.

Female DC-plug remote power connector.



Utilizzabile con / It can be used with

Scheda di controllo / control electronic board CTC011A, CTC445



Scheda tecnica completa sul nostro sito
Complete datasheet on our web site

www.easrl.com



BAT005.00

Batteria ricaricabile al Li-ion / Rechargeable Li-ion battery



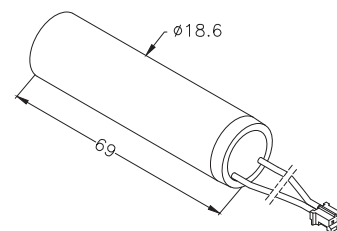
Caratteristiche elettriche
Electrical characteristics

3.7V - 2600mAh - mod. 18650

Cavo
Cable

cm 20 completi di connettore
20-cm-long cable and plug connectors

Con circuito di protezione (PCM) / With protection circuit module (PCM)



Utilizzabile con / It can be used with

Scheda di controllo / control electronic board CTC011A, CTC445



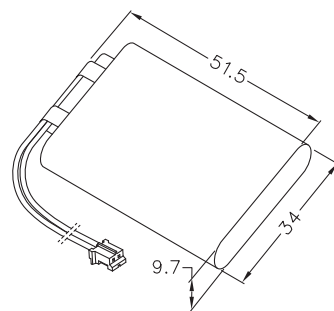
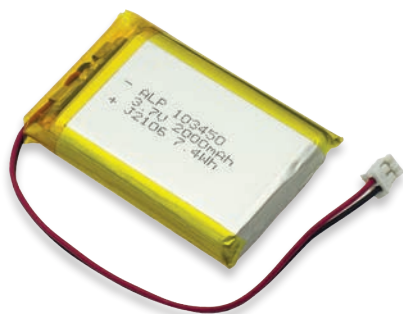
Scheda tecnica completa sul nostro sito
Complete datasheet on our web site

www.easrl.com



BAT006.00

Batteria ricaricabile Li-Po / Rechargeable Li-Po battery



Caratteristiche elettriche Electrical characteristics

3.7V - 2000mAh - mod. 103450

Cavo Cable

cm 10 completi di connettore
10-cm-long cable and plug connectors

Utilizzabile con / It can be used with

Scheda di controllo / control electronic board **CTC445**



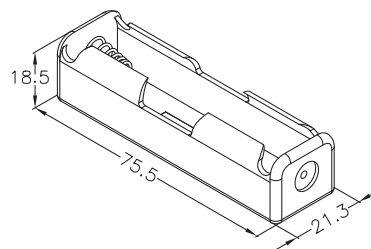
Scheda tecnica completa sul nostro sito
Complete datasheet on our web site

www.easrl.com



BAH.001.00

Custodia in plastica per batteria / Plastic holder for battery



Custodia in plastica per batteria Li-ion codice **BAT005.00**.

Plastic holder for Li-ion battery code **BAT005.00**.



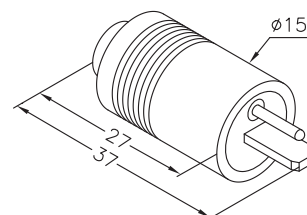
Scheda tecnica completa sul nostro sito
Complete datasheet on our web site

www.easrl.com



CNT014.00

Connettore maschio 2 poli DIN / 2-pole DIN male connector



Connettore maschio 2 poli DIN +/-
Per alimentatori mod. ALS... e driver mod. DRS... a spina integrata.

2-pole DIN +/- male connector

For wall mount power supplies mod. ALS... and drivers mod. DRS...

Fissaggio cavi / Cable fixing: Morsetti a vite / Screw fixing



Scheda tecnica completa sul nostro sito
Complete datasheet on our web site

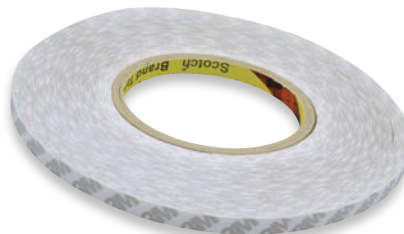
www.easrl.com



NASTRI BIADESIVI DOUBLE-SIDED TAPES



Codice Code	Tipo Type	Spessore Thickness	Larghezza Width	Bobina Reel
NAS018.00	Biadesivo rosso VHB <i>RED VHB double-sided</i>	1 mm	8 mm	33 metri / meter
PAD009.00			8 mm	50 metri / meter
PAD010.00	3M 55230H Biadesivo <i>Double-sided</i>	0.16 mm	6 mm	
PAD013.00			12 mm	25 metri / meter
PAD011.00			10 mm	
PAD012.00	3M 300LSE Biadesivo, ottima aderenza e resistenza <i>Double-sided, excellent adherence and resistance</i>	0.17 mm	8 mm	55 metri / meter
PAD014.00			14 mm	



TAP002.00

Tappo di chiusura per strip LED IP65, con foro di uscita per cavi tondi
End cap for IP65 LED strip with exit hole for round cables



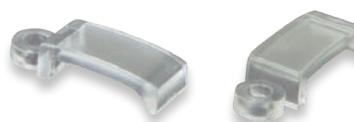
SUP095.01

Blocca strip LED, in silicone con viti incluse
Silicone LED strip clamp with screws included



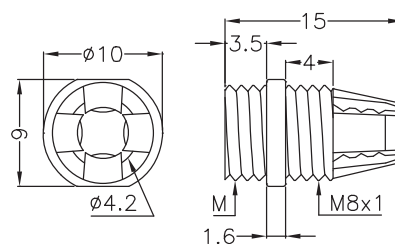
SUP095.02

Blocca strip LED, in PC trasparente con viti incluse
Transparent PC LED strip clamp with screws included



0103.003...

Mini bloccacavo / Mini cable clamp



Materiale / Material

Policarbonato trasparente / Transparent polycarbonate



Scheda tecnica completa sul nostro sito
Complete datasheet on our web site

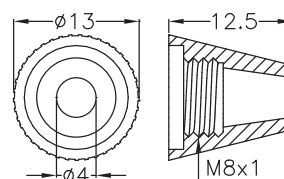
www.easrl.com



Codice Code	(M)	Cavo tondo / Round cable Ø min÷max
0103.003.01.103	M10x1	
0103.003.02.103	M8x1	2.3÷4 mm
0103.003.03.103	M6x1	

0105.003.01.103

Ghiera per mini bloccacavo / Ring for mini cable clamp



Materiale / Material

Policarbonato trasparente / Transparent polycarbonate



Scheda tecnica completa sul nostro sito
Complete datasheet on our web site

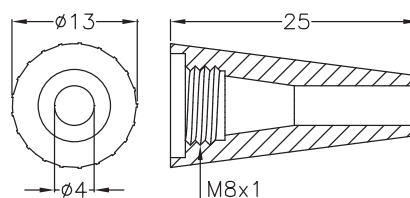
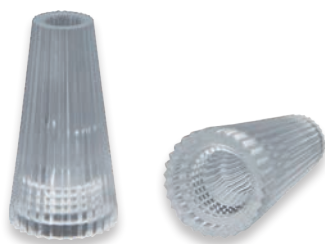
www.easrl.com



Codice Code	(M)	h mm
0105.003.01.103	M8x1 interno / internal	12.5

0105.003.02.103

Ghiera per mini bloccacavo / Ring for mini cable clamp



Materiale / Material

Policarbonato trasparente / Transparent polycarbonate



Scheda tecnica completa sul nostro sito
Complete datasheet on our web site

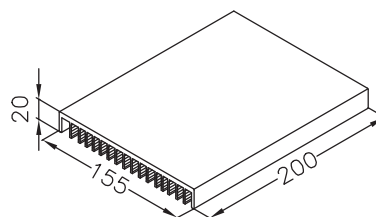
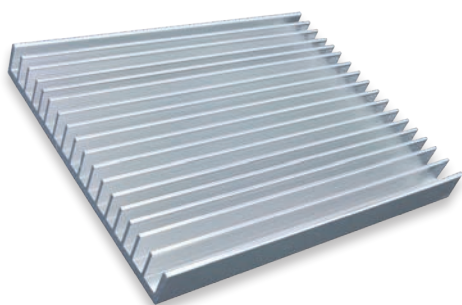
www.easrl.com



Codice Code	(M)	h mm
0105.003.02.103	M8x1 interno / internal	25

DIL210.0200.XXX

Dissipatore in alluminio anodizzato / Anodized aluminium heatsink



Codice Code	mm	Finitura Finishing
DIL210.0200.001	200 x 155 x 20	Anodizzato lucido / Polished anodized
DIL210.0200.002		Anodizzato nero / Black anodized

Potenza massima dissipata / Max. dissipated power: 22W



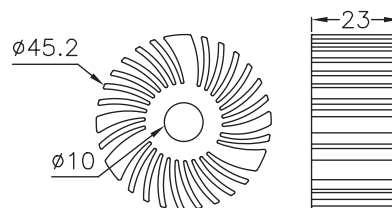
Scheda tecnica completa sul nostro sito
Complete datasheet on our web site

www.easrl.com



DIS007.0023.001

Dissipatore in alluminio anodizzato / Anodized aluminium heatsink



Codice Code	Ø mm	h mm	Foro centrale Central hole	Finitura Finishing
DIS007.0023.001	45.2	23	Ø 10 mm	Anodizzato lucido Polished anodized

Potenza massima dissipata / Max. dissipated power: 4W



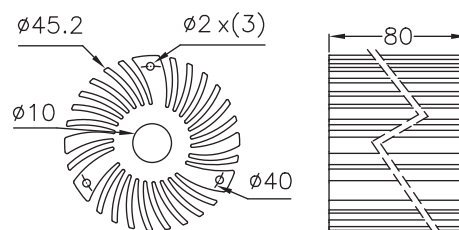
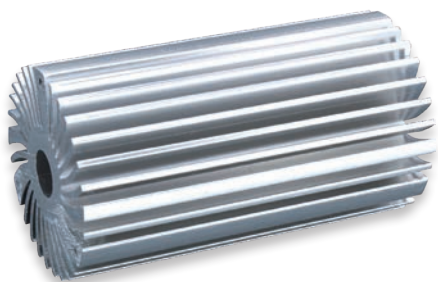
Scheda tecnica completa sul nostro sito
Complete datasheet on our web site

www.easrl.com



DIS007.0080.010

Dissipatore in alluminio anodizzato / Anodized aluminium heatsink



Codice Code	Ø mm	h mm	Foro centrale Central hole	Finitura Finishing
DIS007.0080.010	45.2	80	Ø 10 mm	Anodizzato lucido Polished anodized

Potenza massima dissipata / Max. dissipated power: 10W



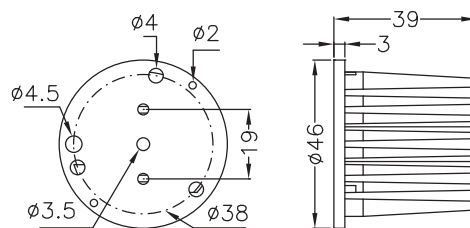
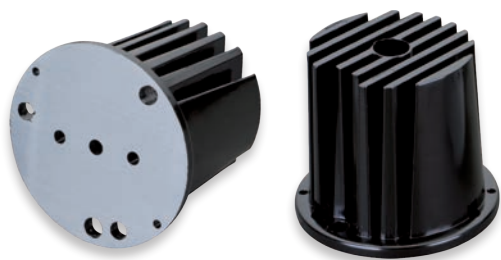
Scheda tecnica completa sul nostro sito
Complete datasheet on our web site

www.easrl.com



DISE02.0039.002

Dissipatore in alluminio anodizzato / Anodized aluminium heatsink



Potenza massima dissipata / Max. dissipated power: 7W



Scheda tecnica completa sul nostro sito
Complete datasheet on our web site

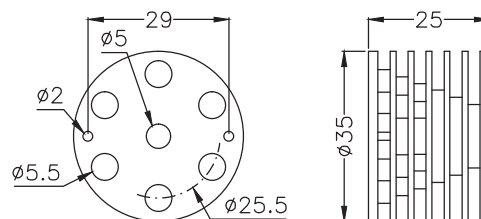
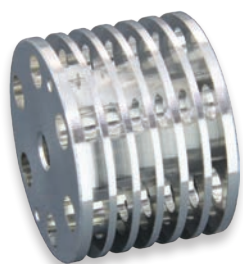
www.easrl.com



Codice Code	Ø mm	h mm	Rht	Finitura Finishing
DISE02.0039.002	46	39	7°C/W	Anodizzato nero Black anodized

DISE05.0025.000

Dissipatore in alluminio anodizzato / Anodized aluminium heatsink



Potenza massima dissipata / Max. dissipated power: 7W



Scheda tecnica completa sul nostro sito
Complete datasheet on our web site

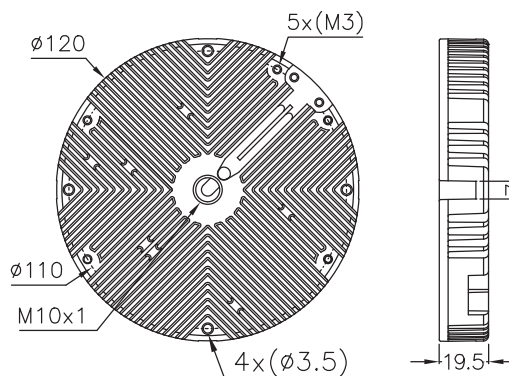
www.easrl.com



Codice Code	Ø mm	h mm	Foro centrale Central hole	Finitura Finishing
DISE05.0025.000	35	25	Ø 5 mm	Alluminio Aluminium

DISE07.0120.020

Dissipatore in alluminio anodizzato / Anodized aluminium heatsink



Potenza massima dissipata / Max. dissipated power: 17W



Scheda tecnica completa sul nostro sito
Complete datasheet on our web site

www.easrl.com



Codice Code	Ø mm	h mm	Foro centrale Central hole	Finitura Finishing
DISE07.0120.020	120	19.5	M10x1	Anodizzato nero Black anodized



Catalogo LED EA 07 - ©EA srl
Progetto e realizzazione grafica EA srl
Finito di stampare nel mese di Ottobre 2024
Rev. 05 del 26/05/2026
