

DRS0500012.240

Driver LED a spina integrata a corrente costante
Wall mount constant current LED driver

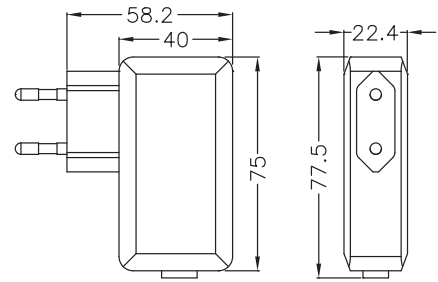


Input (Vac)	200~240V (50/60Hz)
(CC)	500mA
Output (Vdc)	12~24V
(W)	6~12W
t _c	+75°C
t _a	+40°C
Dimensioni / Dimensions	77.5 x 58.2 x 22.4 mm
Colore / Colour	Nero / Black

Tolleranze / Tolerances

Valori elettrici / Electrical values (@25°): ±5%

Dimensionali / Dimensional: ±0.3/0.5mm



Fissaggio cavi / Cable fixing

Connettore femmina 2 poli DIN +/-
2-pole DIN +/- female connector

Approvazioni / Approvals

