

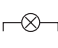




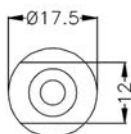
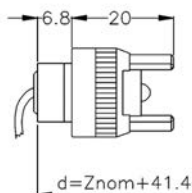


## H2E



	R7s		90/250°C		
	6A - 250V		IP20		
	300°C		APPROVAZIONI APPROVALS		03



Portalamпада a tensione di rete.

Corpo STEATITE, supporto esterno in ottone nichelato, con sistema antirotazione, lunghezza e tipo cavo su richiesta. Utilizzabile in apparecchi in classe II se dotato di cavi in doppio/triplo isolamento in accordo alla CEI EN 60598-1 ultima edizione.

*Main voltage lampholder*

*Housing STEATITE, nickel-plated brass external housing, with antirotation system, alternative wire quality and length on special request. May be used on class II luminaires if with double/triple insulation cable according to CEI EN 60598-1 last ed.*