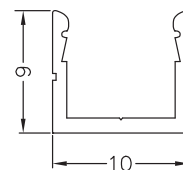
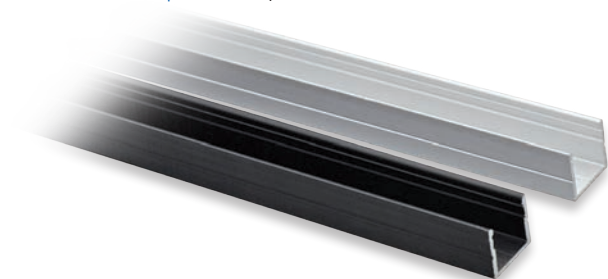


PRA17X

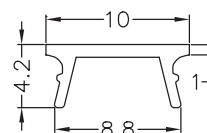
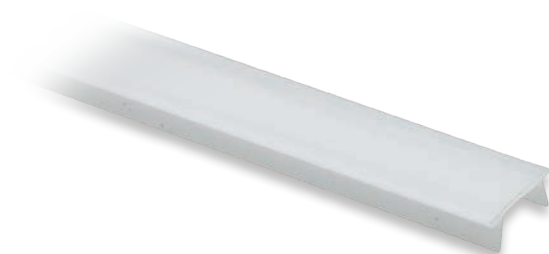
Profilo in alluminio | *Aluminium profiles*



Codice / Code	Lunghezza / Length	Finitura / Finishing
PRA17X.2000.002	200 cm	Anodizzato nero / <i>Black anodized</i>
PRA17X.2000.005		Anodizzato / <i>Anodized</i>

PRP017

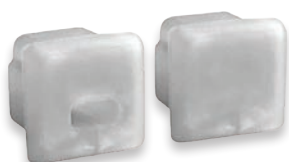
Profilo diffusore in PMMA | *PMMA diffuser profiles*



Codice / Code	Inserimento Insertion	Lunghezza Length	Finitura Finishing
PRP017.2000.02	Pressione Push-in	200 cm	Opale / <i>Opal</i>

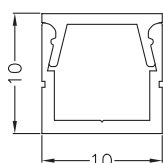
PIA017

Tappo di chiusura | *Closing cap*



Codice Code	Foro uscita cavi Cable exit hole
PIA017.00	/
PIA017.01	SI / YES

Esempio assemblato / Assembled example	Profilo Profile	Profilo diffusore Diffuser profile	Piastrina di chiusura Closing plate	Molla di fissaggio Fixing spring
--	-----------------	------------------------------------	-------------------------------------	----------------------------------



PRA17X...

PRP017...

PIA017...

/