

Schede LED e moduli LED
LED boards and LED modules **01**

Strip LED e profili in alluminio
LED strips and aluminium profiles **02**

Elettronica di controllo
Control electronics **03**

Sistema QUICK-LED
QUICK-LED system **04**

Driver LED e alimentatori LED
LED drivers and LED power supplies **05**

06

Sistemi di raffreddamento
Cooling systems **06**

Sistemi di raffreddamento
Cooling systems

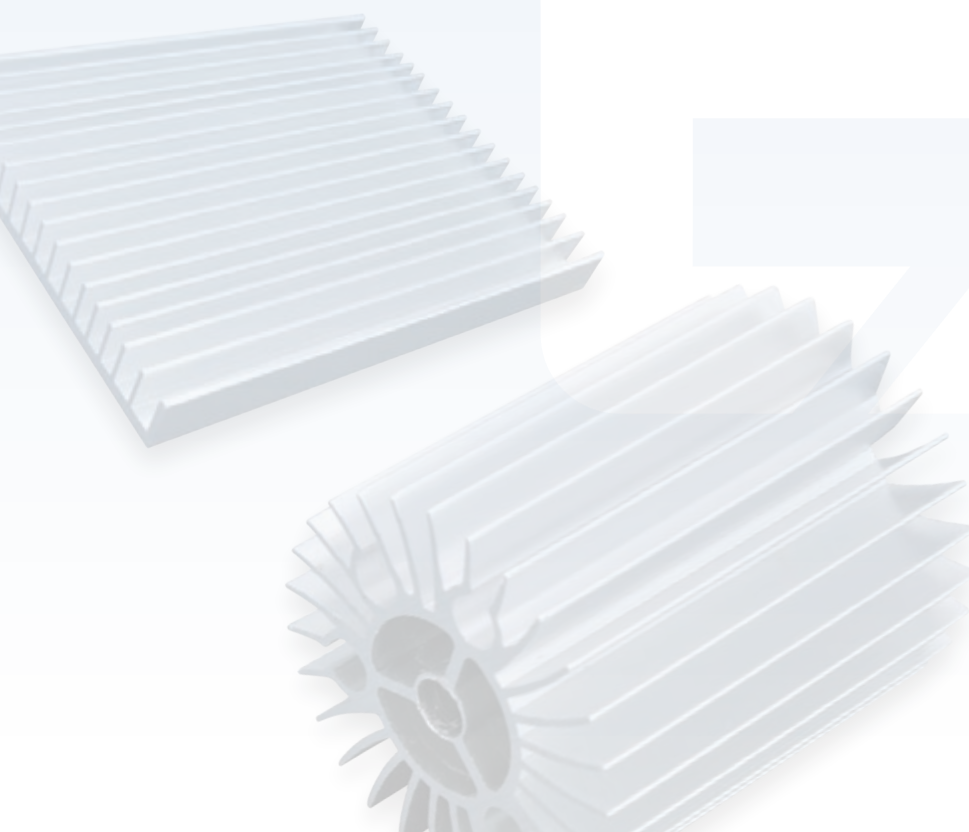
PAD termici
Thermal PADS **07**

Ottiche, cover di protezione e collimatori
Lenses, protection covers and collimators **08**

Cavi e accessori
Cables and accessories **09**

Lampadine LED
LED bulbs **10**

Informazioni tecniche
Technical information **11**



Indice capitolo
Chapter contents

Sistemi di raffreddamento / Cooling systems

pag.

Sistemi di raffreddamento / Cooling systems

233 - 236

Simbologia
Symbols



Quantità minima
Minimum quantity

Tolleranza
Tolerance

Generali $\pm 0,15\text{mm}$; \emptyset fori $\pm 0,1\text{mm}$
General $\pm 0.15\text{mm}$; hole $\emptyset \pm 0.1\text{mm}$

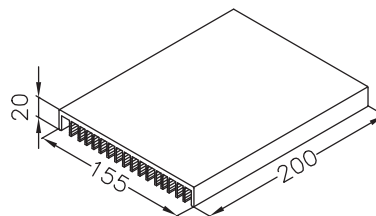
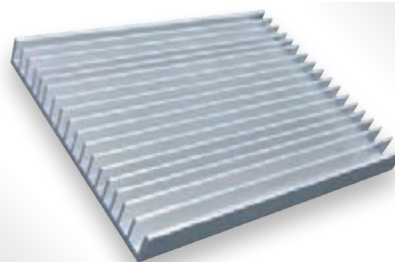


DIL210.0200...

● **Descrizione / Description**

Dissipatore in alluminio anodizzato lucido o nero.
 200 x 155 x 20 mm.
 Potenza massima dissipata 22W.

*Anodised aluminium polished or black heatsink.
 200 x 155 x 20.
 Max. dissipated power 22W.*



Codice / Code	Dimensioni mm Dimensions mm	Finitura / Finishing
DIL210.0200.001	200 x 155 x 20	Anodizzato lucido / Polished anodised
DIL210.0200.002	200 x 155 x 20	Anodizzato nero / Black anodised

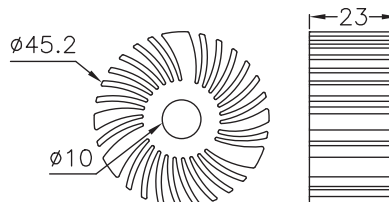


DIS007.0023.001

● **Descrizione / Description**

Dissipatore in alluminio anodizzato lucido.
 Foro passante \varnothing 10 mm, h 23 mm, \varnothing 45,2 mm.
 Potenza massima dissipata 4W.

*Anodised aluminium polished heatsink.
 Central hole \varnothing 10 mm, h 23 mm, \varnothing 45.2 mm.
 Max. dissipated power 4W.*



Codice / Code	\varnothing mm	h mm	Finitura / Finishing
DIS007.0023.001	45,2	23	Anodizzato lucido / Polished anodised

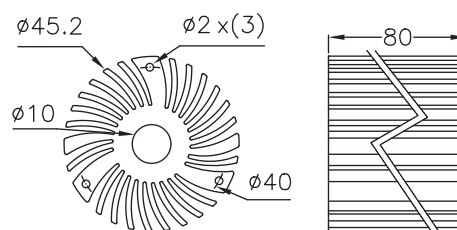


DIS007.0080.010

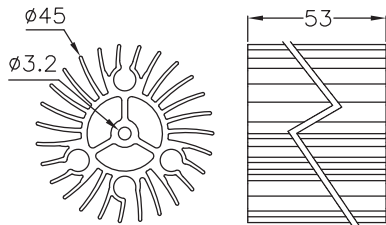
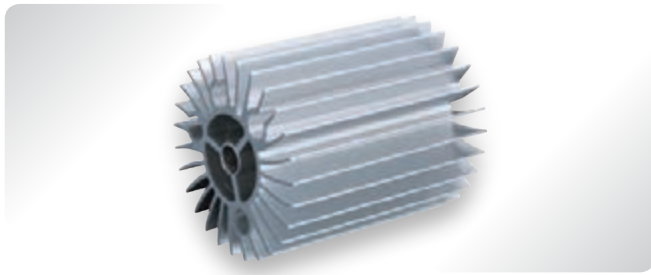
● **Descrizione / Description**

Dissipatore in alluminio anodizzato lucido.
 Foro passante \varnothing 10 mm, h 80 mm, \varnothing 45,2 mm.
 Con 3 fori di fissaggio \varnothing 2 mm.
 Potenza massima dissipata 10W.

*Anodised aluminium polished heatsink.
 Central hole \varnothing 10 mm, h 80 mm, \varnothing 45.2 mm.
 With 3 fixing holes \varnothing 2 mm.
 Max. dissipated power 10W.*



Codice / Code	\varnothing mm	h mm	Finitura / Finishing
DIS007.0080.010	45,2	80	Anodizzato lucido / Polished anodised

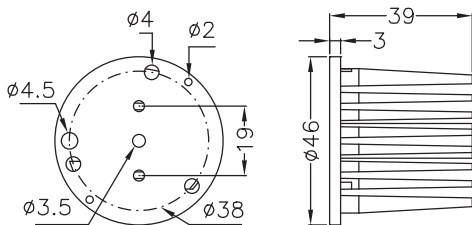
**Descrizione / Description**

Dissipatore in alluminio anodizzato lucido.
h53 mm, Ø 45 mm.
Potenza massima dissipata 8W.

*Anodised aluminium polished heatsink.
h53 mm, Ø 45 mm.
Max. dissipated power 8W.*



Codice / Code	Ø mm	h mm	Finitura / Finishing
DIS1163.0530.011	45	53	Anodizzato lucido / Polished anodised

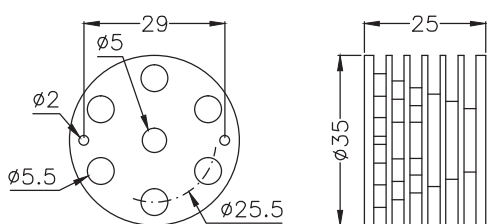
**Descrizione / Description**

Dissipatore in alluminio anodizzato nero.
h 39 mm, Ø 46 mm, Rth=7°C/W.
Abbinabile alle schede LED CL012, CL024, CL028, CL036 e lente Ø 50 mm.
Potenza massima dissipata 7W.

*Anodised black aluminium heatsink.
h 39 mm, Ø 46 mm, Rth=7°C/W.
It can be combined with LED boards code CL012, CL024, CL028, CL036 and lens Ø 50 mm.
Max. dissipated power 7W.*



Codice / Code	Ø mm	h mm	Finitura / Finishing
DISE02.0039.002	46	39	Anodizzato nero / Black anodised

**Descrizione / Description**

Dissipatore in alluminio tornito.
h 25 mm, Ø 35 mm.
Abbinabile alla scheda LED CL003 e lente Ø 35 mm.
Potenza massima dissipata 3W.

*Aluminium heatsink.
h 25 mm, Ø 35 mm.
It can be combined with LED board code CL003 and lens Ø 35 mm.
Max. dissipated power 3W.*



Codice / Code	Ø mm	h mm	Finitura / Finishing
DISE05.0025.000	35	25	Anodizzato lucido / Polished anodised



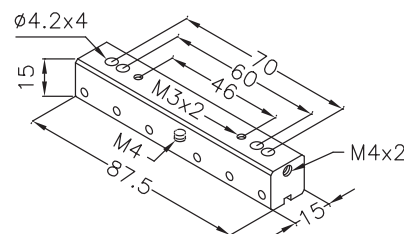
SUP096.02

● Descrizione / Description

Supporto dissipatore in alluminio 87,5 x 15 x 15 mm.
 Se abbinato al supporto SUP097 può essere applicato a staffa R7s.
 Potenza massima dissipata 5W.
 Viti M3 per fissaggio LED incluse.

*Aluminium heatsink holder 87.5 x 15 x 15 mm.
 If combined with SUP097 support, it can be fixed on R7s bracket
 Max. dissipated power 5W.
 M3 screws for LED fixing included.*

Esempio di assemblaggio / Assembly example
 Cap. 11 - pag. 304



Codice / Code

Dimensioni mm / Dimensions mm

SUP096.02

15 x 87,5 x 15



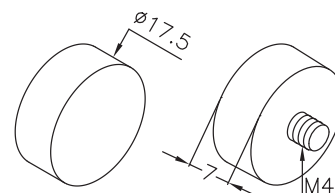
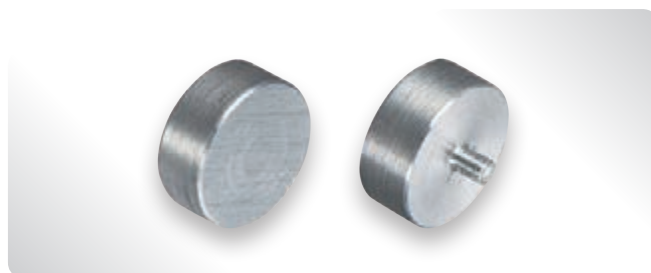
SUP097.01

● Descrizione / Description

Supporto reggimolla per vetri 1/2 e 3/4, da abbinare a SUP096.02.
 Ø 17,5 mm x h 7 mm.
 Per applicazione su staffa R7s.

*Spring holder support for 1/2 and 3/4 glasses. To be assembled with SUP096.02.
 Ø 17.5 mm x h 7 mm.
 For fixing to R7s brackets.*

Esempio di assemblaggio / Assembly example
 Cap. 11 - pag. 304



Codice / Code

Ø mm

h mm

Materiale / Material

SUP097.01

17,5

7

/



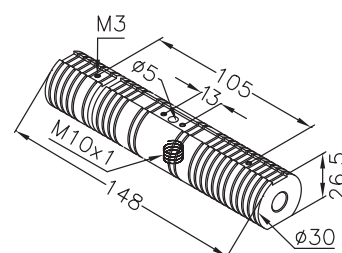
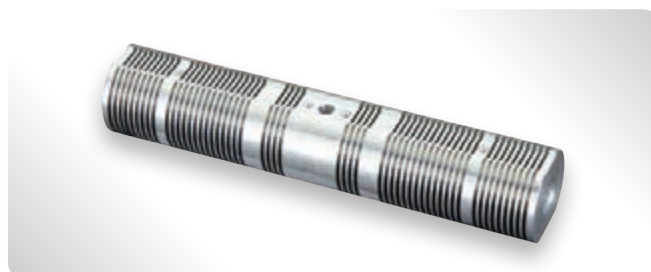
SUP099.01

● Descrizione / Description

Supporto dissipatore in alluminio, Ø 30 mm x 148 mm.
 Potenza massima dissipata 10W.
 Viti M3 per fissaggio LED incluse.

*Aluminium heatsink holder, Ø 30 mm x 148 mm.
 Max. dissipated power 10W.
 M3 screws for LED fixing included.*

Esempio di assemblaggio / Assembly example
 Cap. 11 - pag. 304



Codice / Code

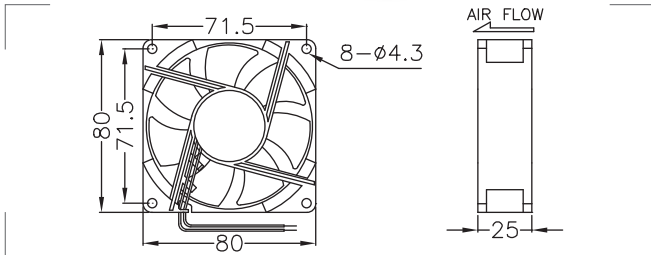
Dimensioni mm
 Dimensions mm

Materiale / Material

SUP099.01

Ø 30 x 148 mm

Alluminio / Aluminium



● Descrizione / Description

Ventola di raffreddamento.
 Fissaggio a vite.

*Cooling fan.
 Screw fixing.*



Codice / Code	Input Vdc	CFM	Power W	dB@1m	RPM	Dimensioni mm Dimensions mm
FAN24.001.00	10~27	33	1,34	28	-	80 x 80 x 25